

Model SMA Series Miniature S-Type Load Cell (U.S. & Metric)

Why the Interface model SMA Miniature S-Type Load Cell is the best in class:

- Proprietary Interface temperature compensated strain gages
- Performance to .05%
- Small compact design
- Tension & compression



SPECIFICATIONS

ACCURACY – MAX

Nonlinearity–% FS.....	±0.05
Hysteresis–% FS.....	±0.05
Nonrepeatability–% RO.....	±0.02
Creep, in 20 min–%.....	±0.05

TEMPERATURE

Compensated Range–°F.....	15 to 115
Compensated Range–°C.....	-10 to 45
Operating Range–°F.....	-65 to 200
Operating Range–°C.....	-55 to 90
Effect on Output–%/°F – MAX.....	±0.0008
Effect on Output–%/°C – MAX.....	±0.0014
Effect on Zero–% RO/°F – MAX.....	±0.005
Effect on Zero–% RO/°C – MAX.....	±0.009

ELECTRICAL

Rated Output–mV/V (nominal).....	2.5
Zero Balance–%RO.....	-0.6 to 0.0
Bridge Resistance–Ohm (nominal).....	350
Excitation Voltage–MAX.....	15 VDC
Insulation Resistance–Megohm.....	>5000

MECHANICAL

Calibration.....	Tension
Safe Overload–% CAP.....	150
Cable length–ft.....	5

STANDARD CONFIGURATION

5 ft Integral Cable (SMA-nn)

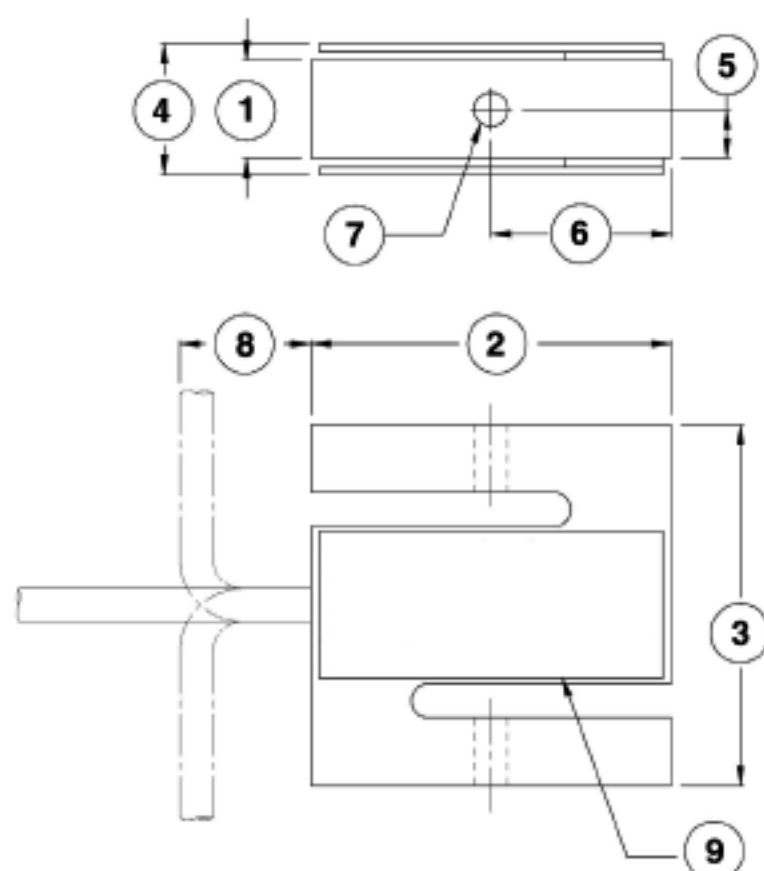
OPTIONS*

Extra Cable Length
Standardized Output

ACCESSORIES*

Instrumentation

*See appendix for more technical information



DIMENSIONS

See Drawing	CAPACITY	
	US (lbf)	Metric (N)
	15, 100, 150, 200	60, 500, 600, 900
	inch	mm
①	0.38	9.53
②	1.38	35
③	1.38	35
④	0.56	14.2
⑤	0.19	4.8
⑥	0.69	17.5
⑦	#8-32 UNF - 2B	M4 X .7 - 6
⑧	0.5	12.7
⑨	Identification Label	